



## 52 Parkside, (Casurina)

\$ 740,000

2  2  2 

### Modern design with contemporary luxuries

Casuarina is a modern design offering contemporary luxuries. The design focusses on harnessing the natural light featuring a modern kitchen and open plan living and dining with doors extending onto the outdoor deck. Retreat to the master suite complete with a stunning walk-through wardrobe into the modern ensuite. Enjoy having space to host guests with a guest bedroom and second bathroom.

- Spacious modern kitchen
- Guest bedroom
- Double garage
- Master with WIR and ensuite
- Outdoor covered alfresco

## Parkside Yamba, Yamba

A community designed with you in mind



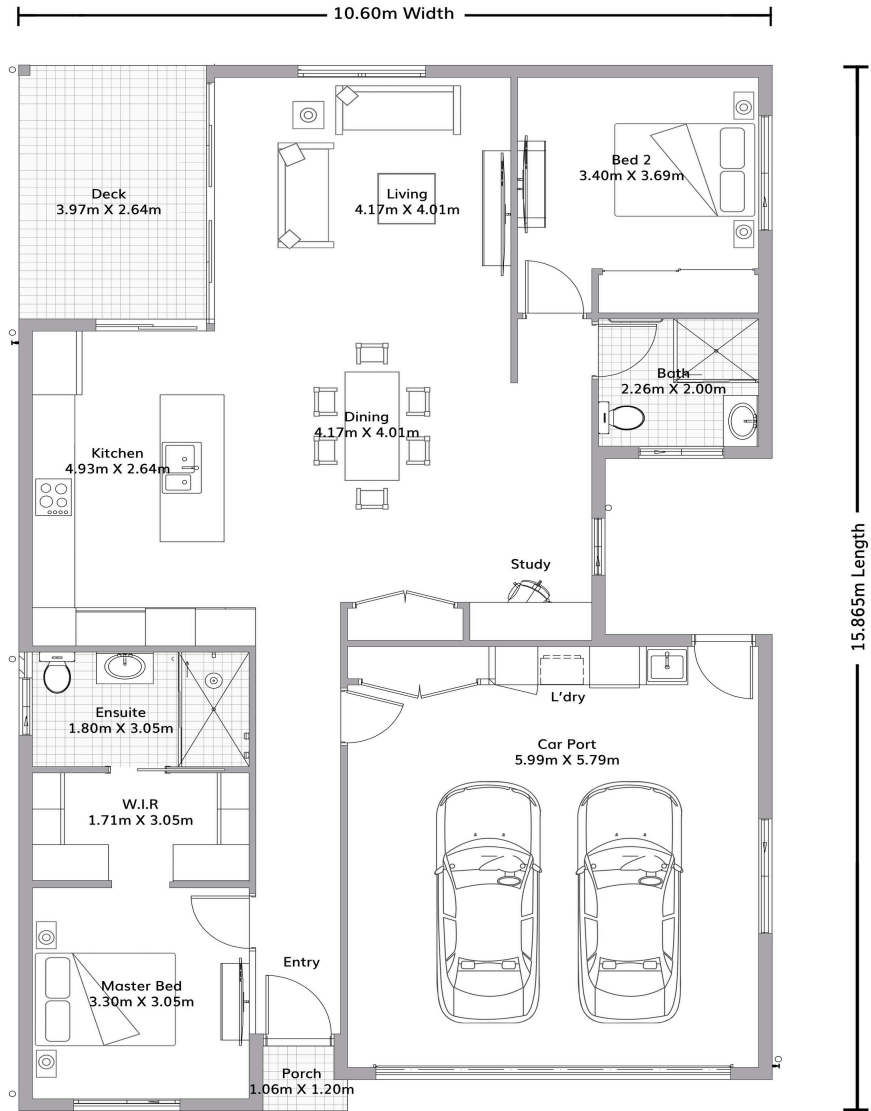
8 Park Avenue, NSW 2464



Get in touch with Wendy Cochrane  
(02) 6619 2044



**PARKSIDE**  
YAMBA



Get in touch with Wendy Cochrane  
(02) 6619 2044



PARKSIDE  
YAMBA