



65 Parkside, (Sandpiper)

\$ 700,000

2 2 1 2

Modern, stylish and welcoming

Discover your new home in the modern and stylish Sandpiper design. The chef's kitchen is the heart of the home overlooking the open plan living and dining areas flowing onto the alfresco. Step into the master suite featuring an oversized walk-in robe and modern bathroom. Enjoy flexible living with a guest bedroom, separate bathroom, multi-purpose room, and double car garage.

- Modern kitchen
- Master with WIR and ensuite
- Double garage
- Open plan living and dining
- Multi-purpose room

Parkside Yamba, Yamba

A community designed with you in mind



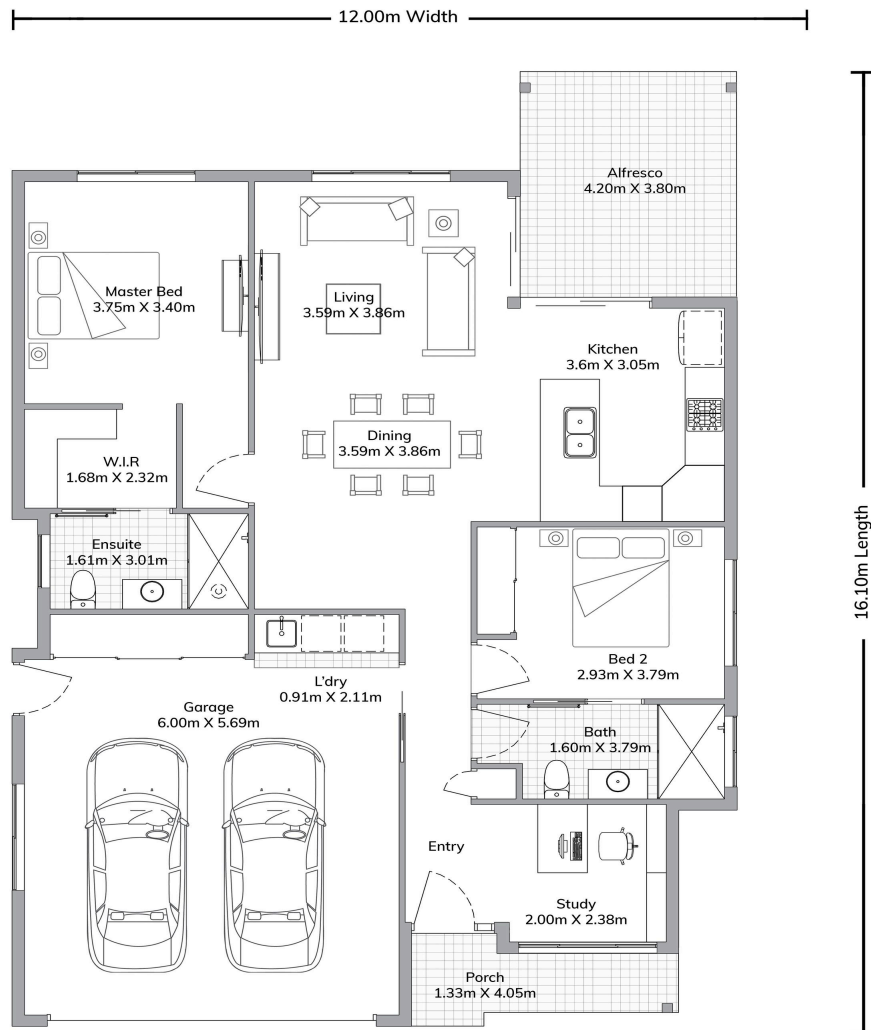
8 Park Avenue, NSW 2464



Get in touch with Wendy Cochrane
(02) 6619 2044



PARKSIDE
YAMBA



Get in touch with Wendy Cochrane
(02) 6619 2044



PARKSIDE
YAMBA