



10 Lumora, (Magnolia)

\$ 535,000

2  2  1 

Enjoy the best in downsizing

The Magnolia is a modern design featuring a gourmet kitchen with plenty of space to entertain with versatile living areas, alfresco, and guest bedroom. Enjoy the best of downsizing with a master suite with built-in robe and ensuite, guest bathroom, study, secure single garage, and landscaped gardens.

- Gourmet kitchen
- Open plan living and dining
- Master with BIR and ensuite
- Guest bedroom
- Alfresco

Lumora, Mickleham

A community designed with you in mind

- Clubhouse
- Cinema
- Gym & wellness centre
- Swimming pool
- Pet friendly



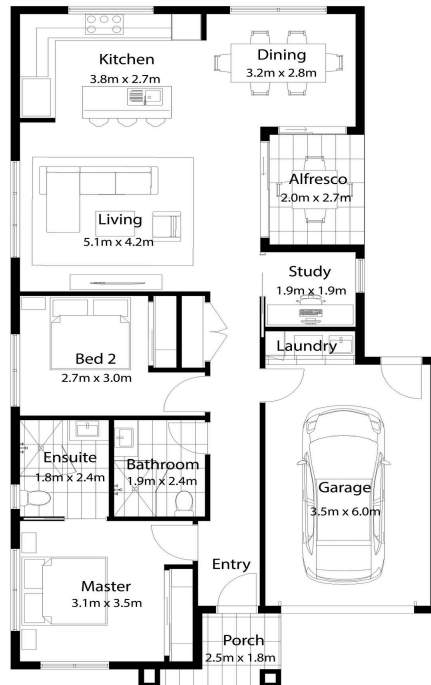
320 English Street, VIC 3064



Get in touch with Steve Fulton
(03) 7043 5665



LUMORA
MERRIFIELD



Get in touch with Steve Fulton
(03) 7043 5665



LUMORA
MERRIFIELD