



11 Lumora, (Nandina)

\$ 535,000

2 2 1 1

Chic modern living

Nandina offers chic modern living with the generous modern kitchen overlooking the light filled open plan living and dining, flowing seamlessly to a spacious alfresco for relaxed entertaining. Unwind in the private master with built in robe and ensuite, and enjoy the flexibility of a guest bedroom, study, separate bathroom, secure single garage and low maintenance landscaping.

- Modern kitchen
- Open plan living and dining
- Master with BIR and ensuite
- Guest bedroom
- Alfresco

Lumora, Mickleham

A community designed with you in mind

- Clubhouse
- Cinema
- Gym & wellness centre
- Swimming pool
- Pet friendly



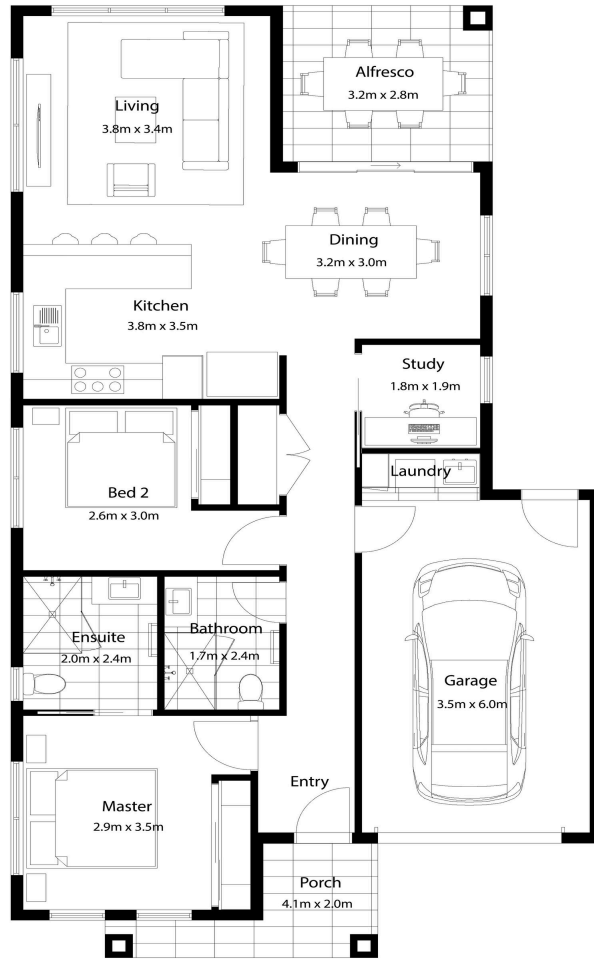
320 English Street, VIC 3064



Get in touch with Steve Fulton
(03) 7043 5665



LUMORA
MERRIFIELD



Get in touch with Steve Fulton
(03) 7043 5665



LUMORA
MERRIFIELD